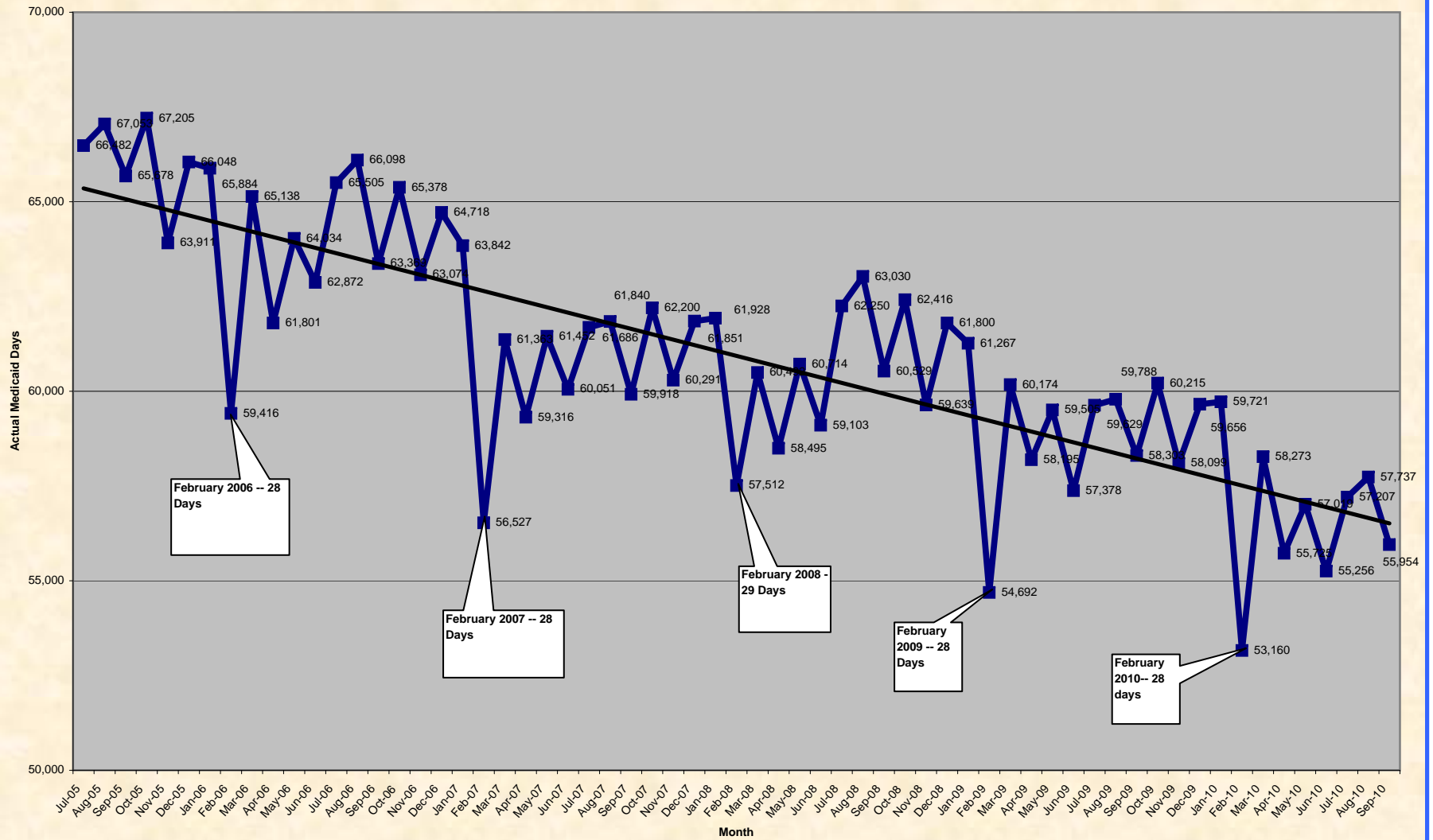
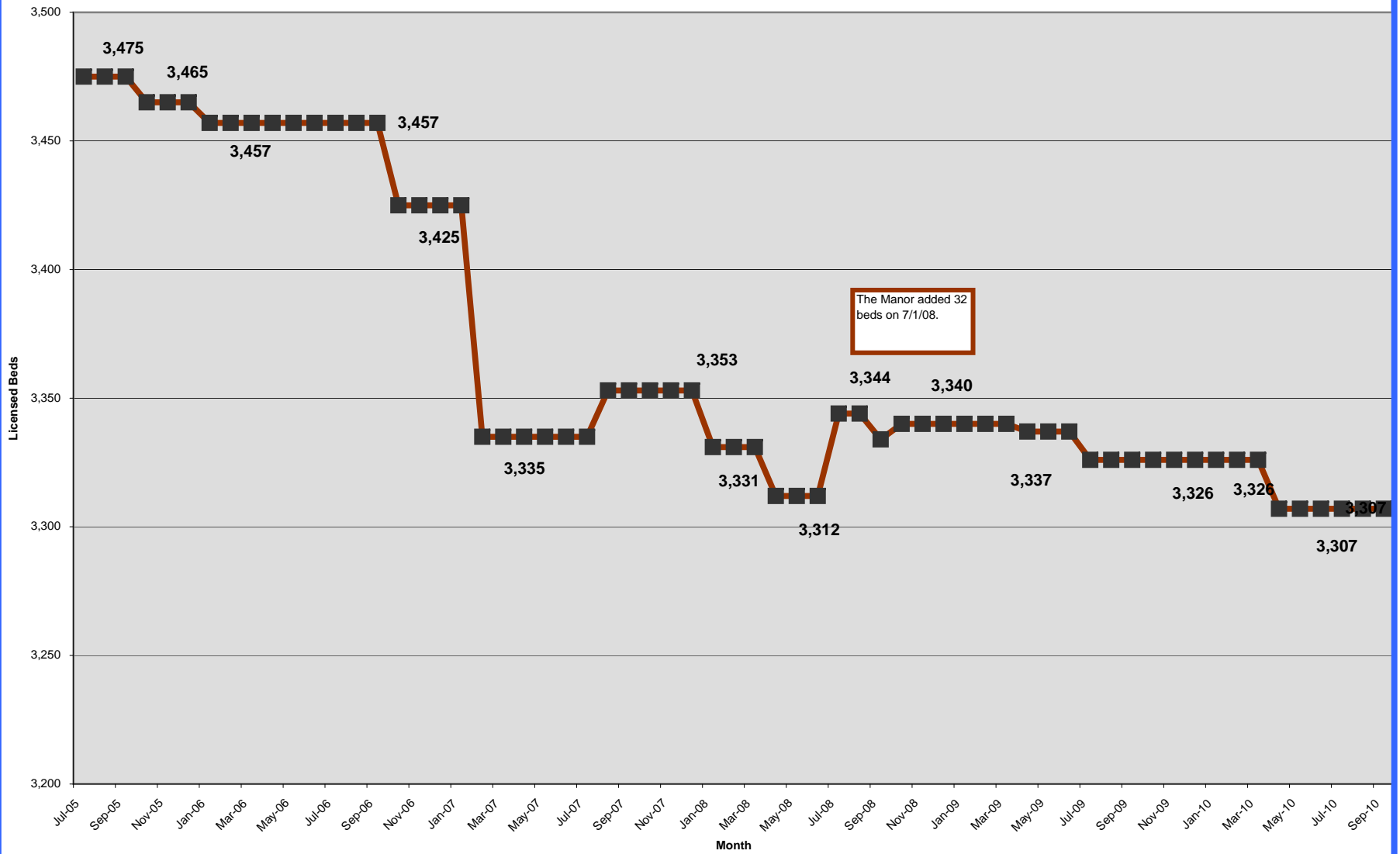


**Actual Medicaid Days by Month with Overall Trend Line  
(Major Drops Each February Due to Fewer Days in Month)**

Prepared by Kathleen Denette,  
Rate Setting and Auditing Chief,  
Division of Rate Setting

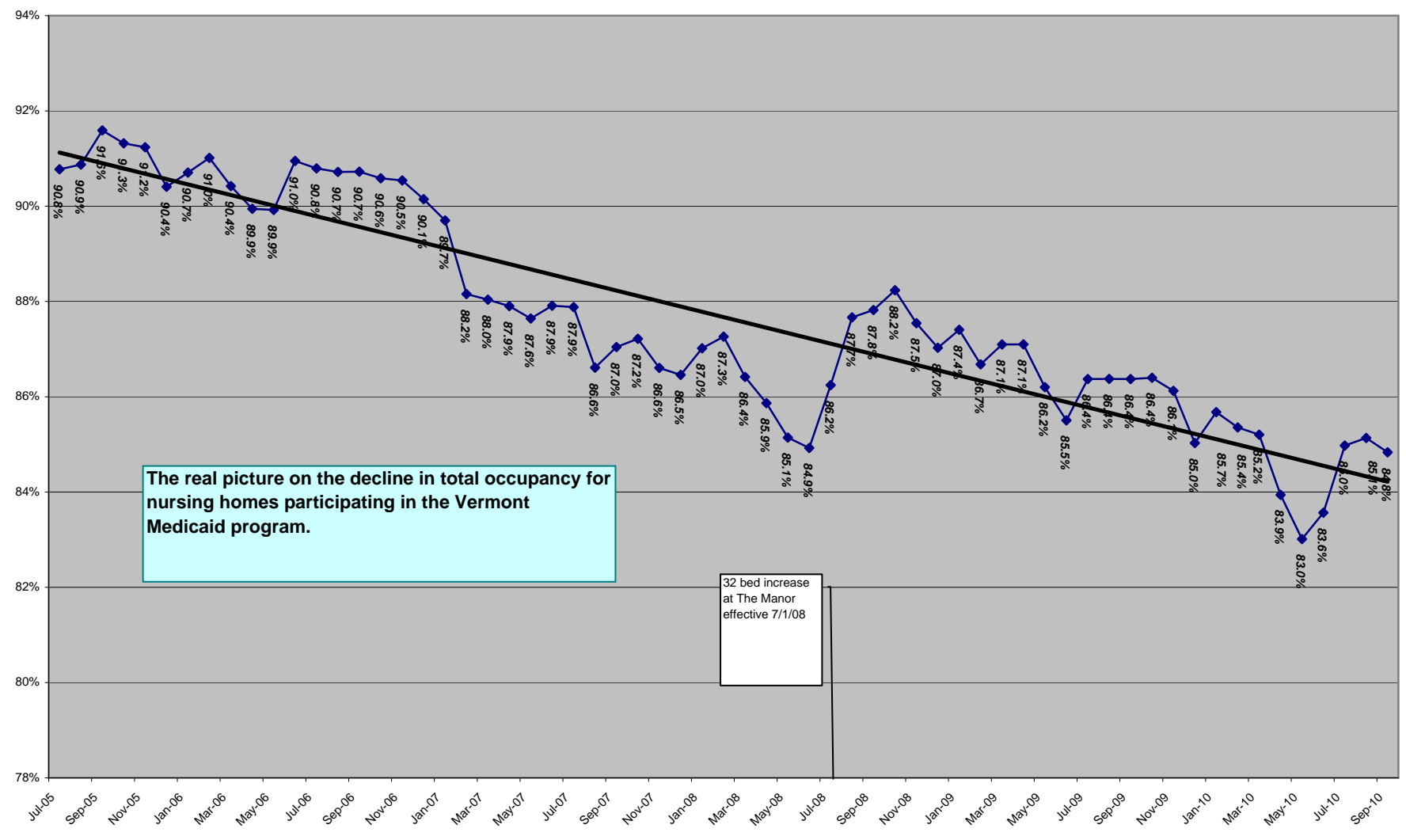


Total Number of Vermont Nursing Home Licensed Beds Including Homes Not Participating in Medicaid

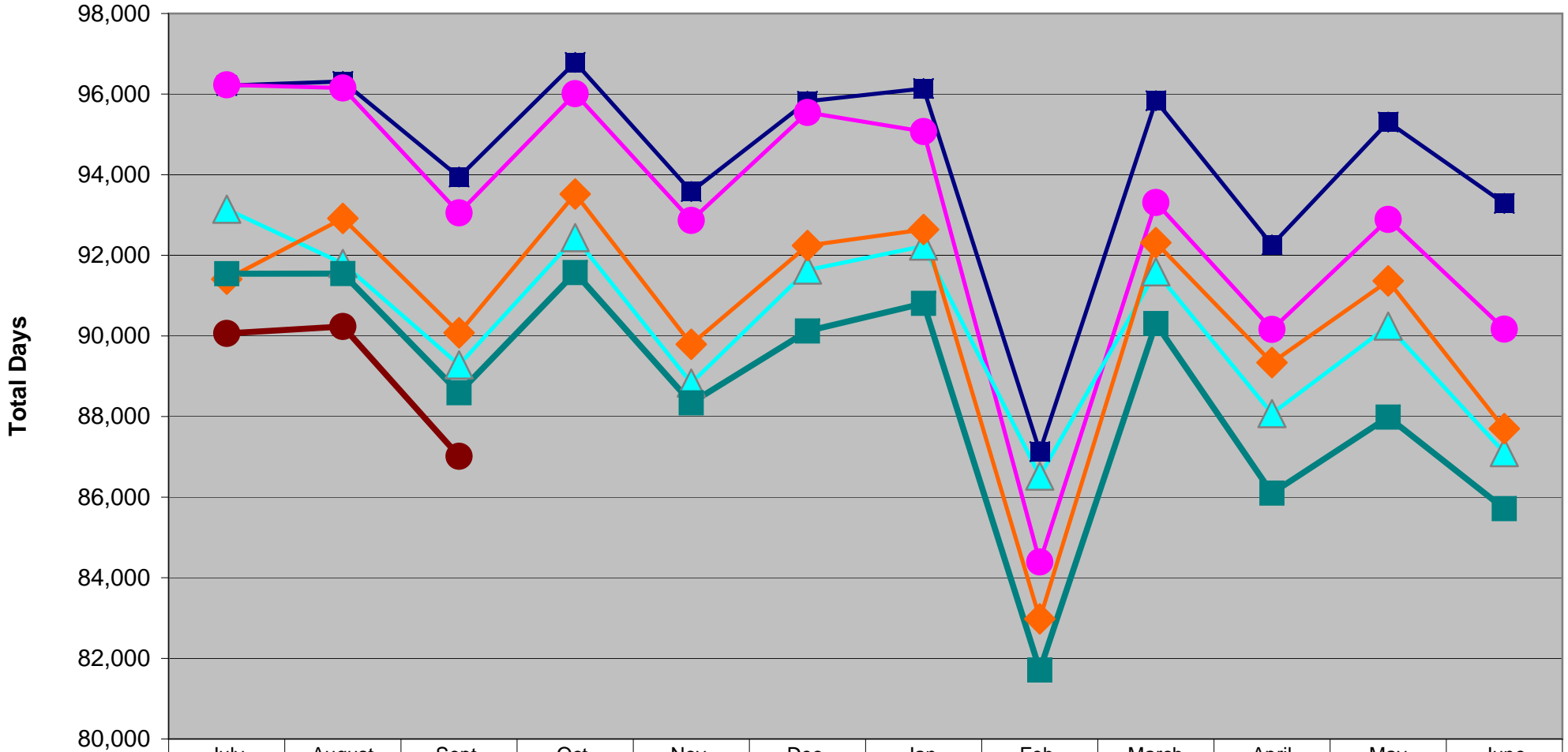


**Absolute Decrease in Total Occupancy - Unaffected by Decline in Beds  
With Occupancy Calculated as if Number of Beds Held Steady at 3,419 from July 1, 2005 to Present**

(Occupancy Percentages Based on a Changing Number of Beds Are Not Comparable)



**Total Days from SFY 06 to SFY 11**

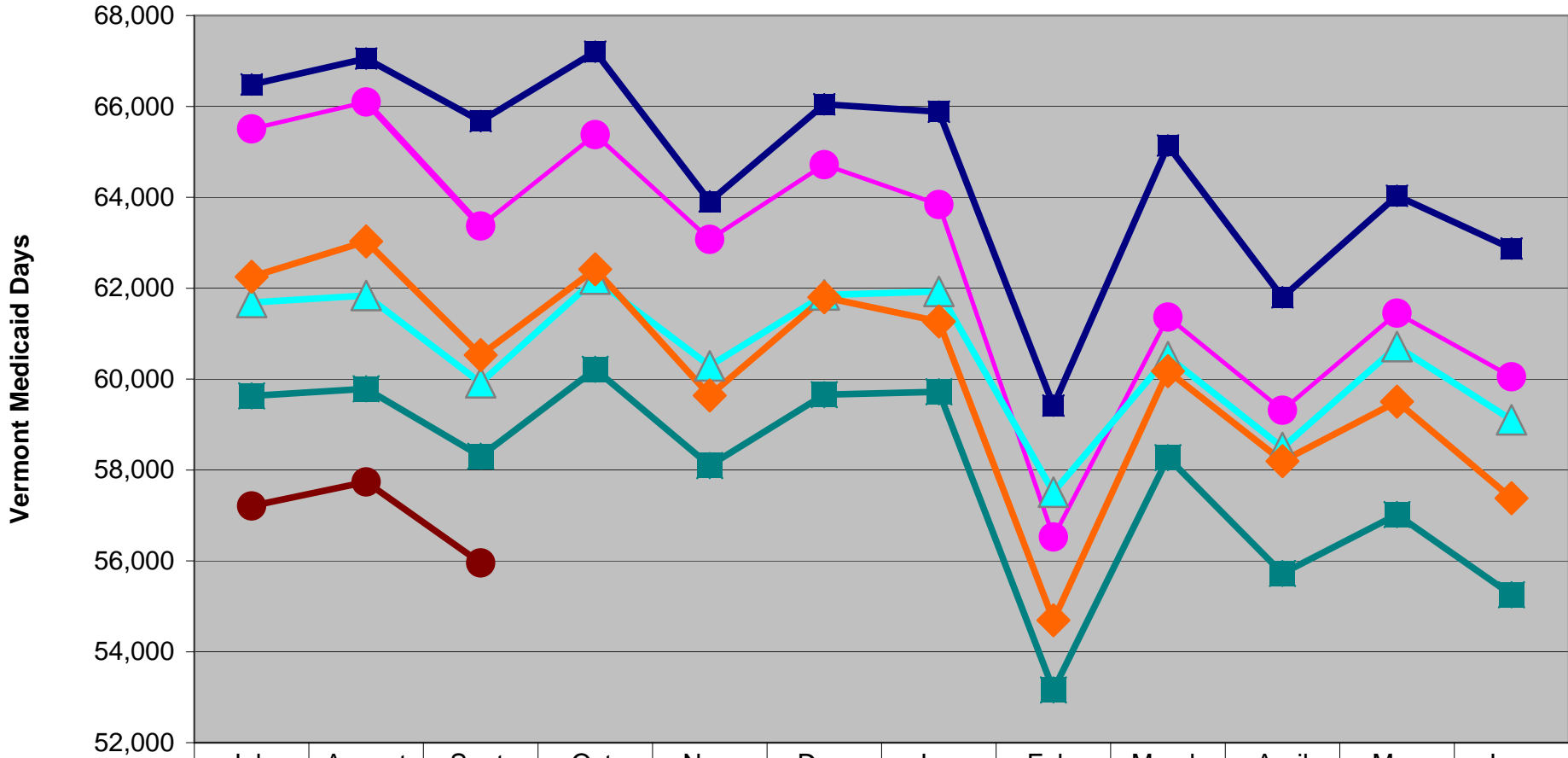


	July	August	Sept.	Oct.	Nov.	Dec.	Jan.	Feb.	March	April	May	June
■ SFY 06	96,212	96,316	93,944	96,789	93,582	95,822	96,139	87,130	95,836	92,257	95,306	93,288
● SFY 07	96,231	96,153	93,055	96,011	92,867	95,545	95,072	84,392	93,311	90,162	92,890	90,169
▲ SFY 08	93,145	91,798	89,282	92,439	88,830	91,636	92,229	86,521	91,591	88,072	90,243	87,106
◆ SFY 09	91,408	92,915	90,077	93,520	89,793	92,241	92,641	82,979	92,314	89,339	91,364	87,701
■ SFY 10	91,545	91,546	88,590	91,571	88,338	90,120	90,808	81,711	90,306	86,098	87,985	85,714
● SFY 11	90,063	90,234	87,014									

**Month**



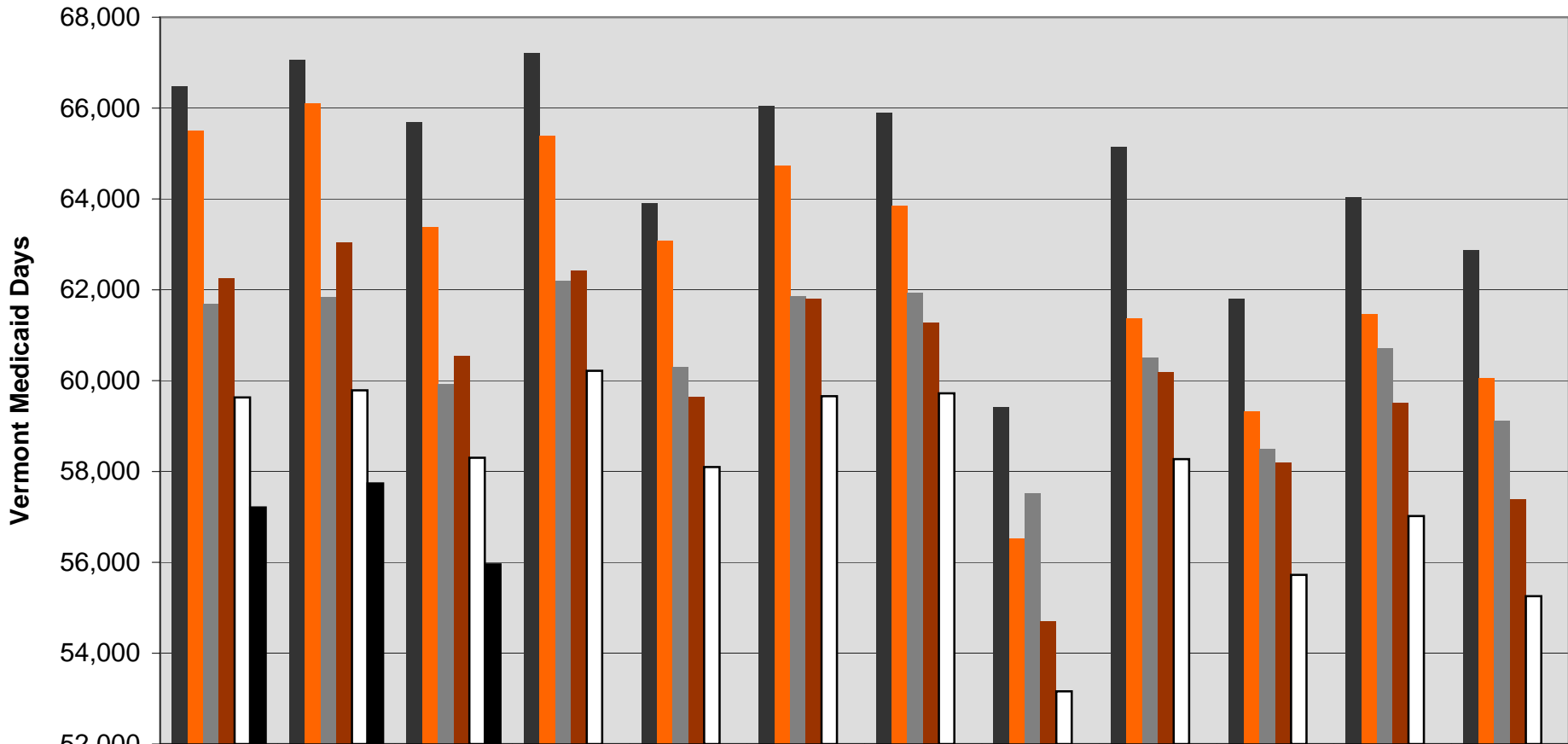
Vermont Medicaid Days from SFY 06 to SFY 11



	July	August	Sept.	Oct.	Nov.	Dec.	Jan.	Feb.	March	April	May	June
SFY 06	66,482	67,053	65,678	67,205	63,911	66,048	65,884	59,416	65,138	61,801	64,034	62,872
SFY 07	65,505	66,098	63,369	65,378	63,074	64,718	63,842	56,527	61,363	59,316	61,452	60,051
SFY 08	61,686	61,840	59,918	62,200	60,291	61,851	61,928	57,512	60,492	58,495	60,714	59,103
SFY 09	62,250	63,030	60,529	62,416	59,639	61,800	61,267	54,692	60,174	58,195	59,505	57,378
SFY 10	59,629	59,788	58,303	60,215	58,099	59,656	59,721	53,160	58,273	55,725	57,019	55,256
SFY 11	57,207	57,737	55,954									

Month

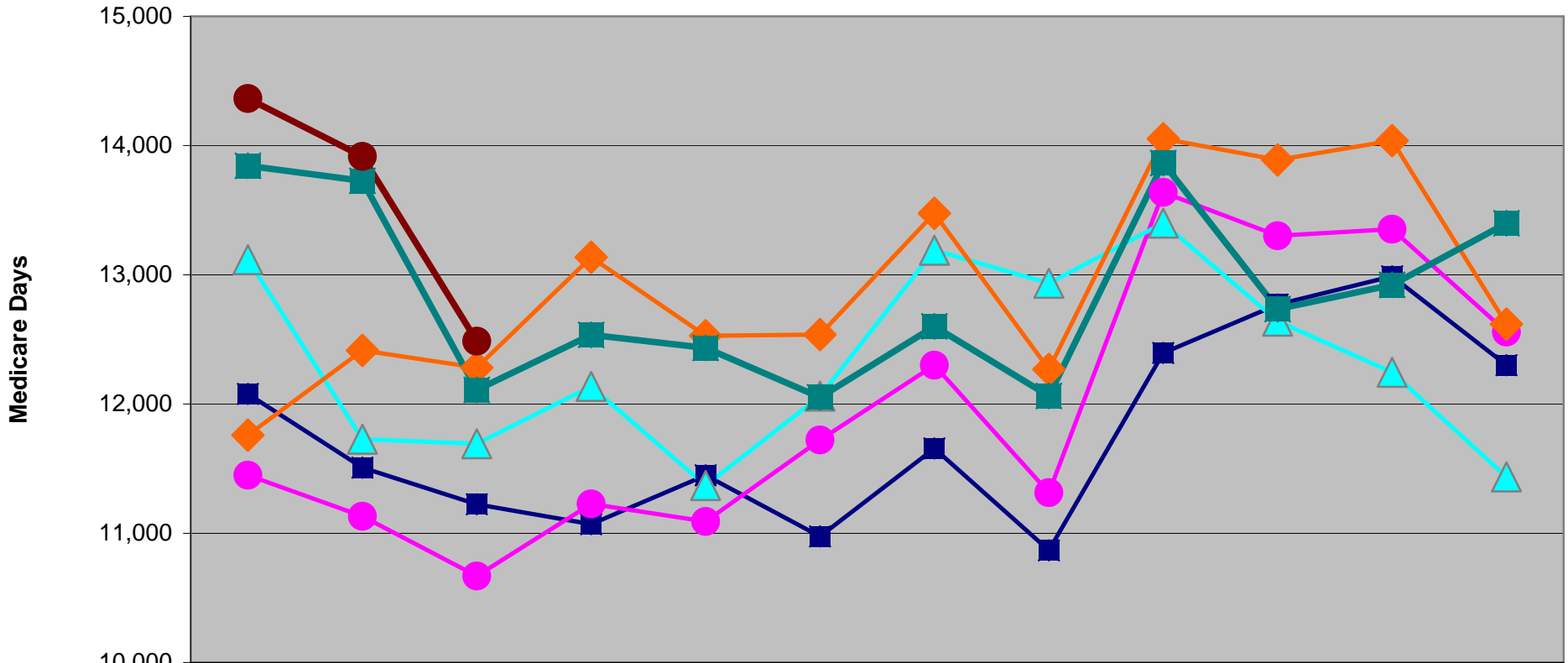
### Vermont Medicaid Days from SFY 06 to SFY 11



	July	August	Sept.	Oct.	Nov.	Dec.	Jan.	Feb.	March	April	May	June
■ SFY 06	66,482	67,053	65,678	67,205	63,911	66,048	65,884	59,416	65,138	61,801	64,034	62,872
■ SFY 07	65,505	66,098	63,369	65,378	63,074	64,718	63,842	56,527	61,363	59,316	61,452	60,051
■ SFY 08	61,686	61,840	59,918	62,200	60,291	61,851	61,928	57,512	60,492	58,495	60,714	59,103
■ SFY 09	62,250	63,030	60,529	62,416	59,639	61,800	61,267	54,692	60,174	58,195	59,505	57,378
□ SFY 10	59,629	59,788	58,303	60,215	58,099	59,656	59,721	53,160	58,273	55,725	57,019	55,256
■ SFY 11	57,207	57,737	55,954									

**Month**

**Medicare Days from SFY 06 to SFY 11**

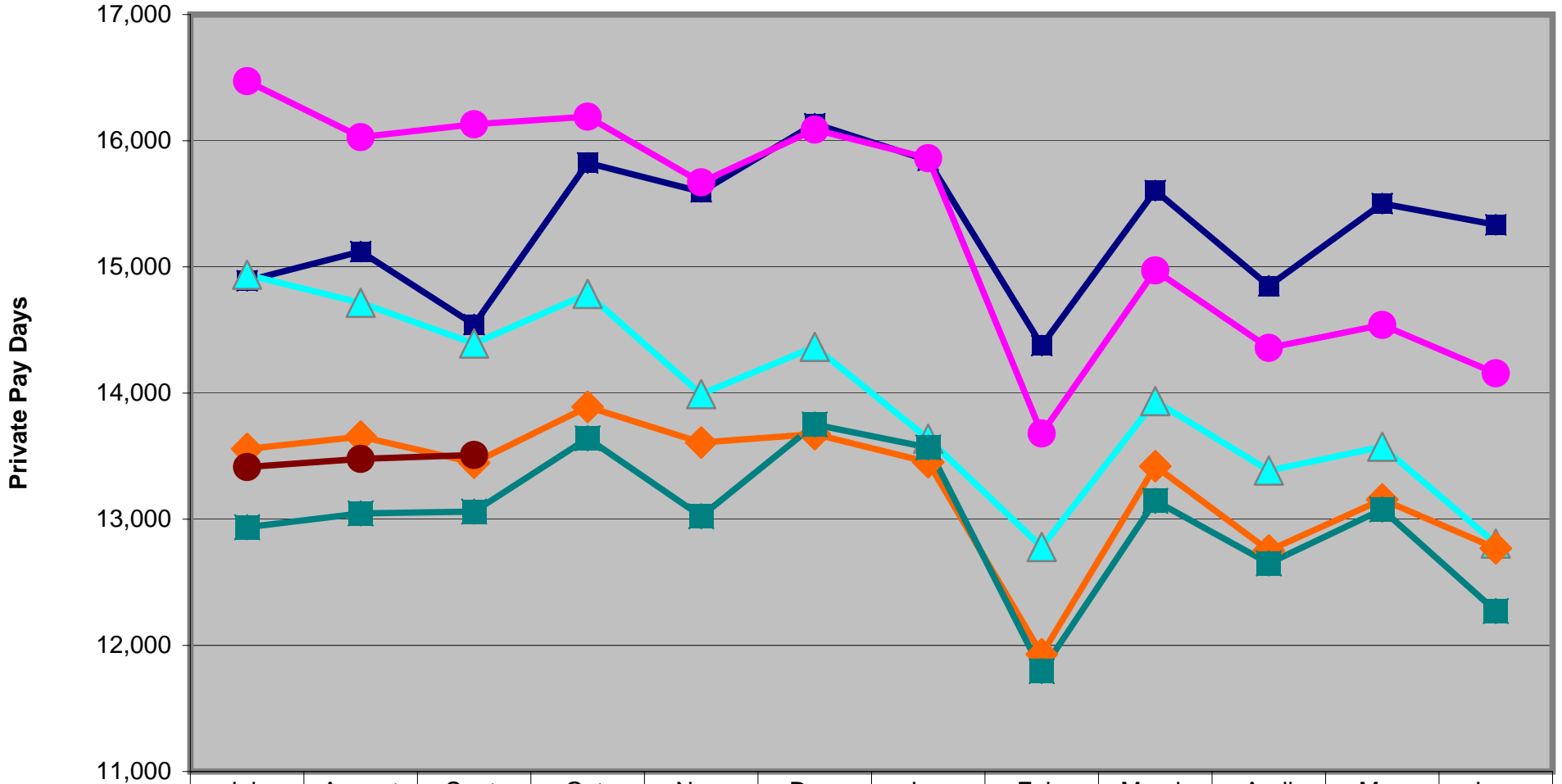


	July	August	Sept.	Oct.	Nov.	Dec.	Jan.	Feb.	March	April	May	June
■ SFY 06	12,078	11,508	11,224	11,070	11,448	10,976	11,656	10,868	12,395	12,770	12,988	12,301
● SFY 07	11,449	11,132	10,669	11,227	11,091	11,722	12,301	11,314	13,638	13,302	13,353	12,557
▲ SFY 08	13,117	11,728	11,693	12,136	11,370	12,062	13,190	12,934	13,400	12,641	12,245	11,436
◆ SFY 09	11,759	12,415	12,282	13,136	12,528	12,537	13,476	12,268	14,052	13,889	14,038	12,618
■ SFY 10	13,844	13,727	12,109	12,535	12,435	12,052	12,601	12,063	13,864	12,735	12,922	13,399
● SFY 11	14,364	13,916	12,487									

**Month**



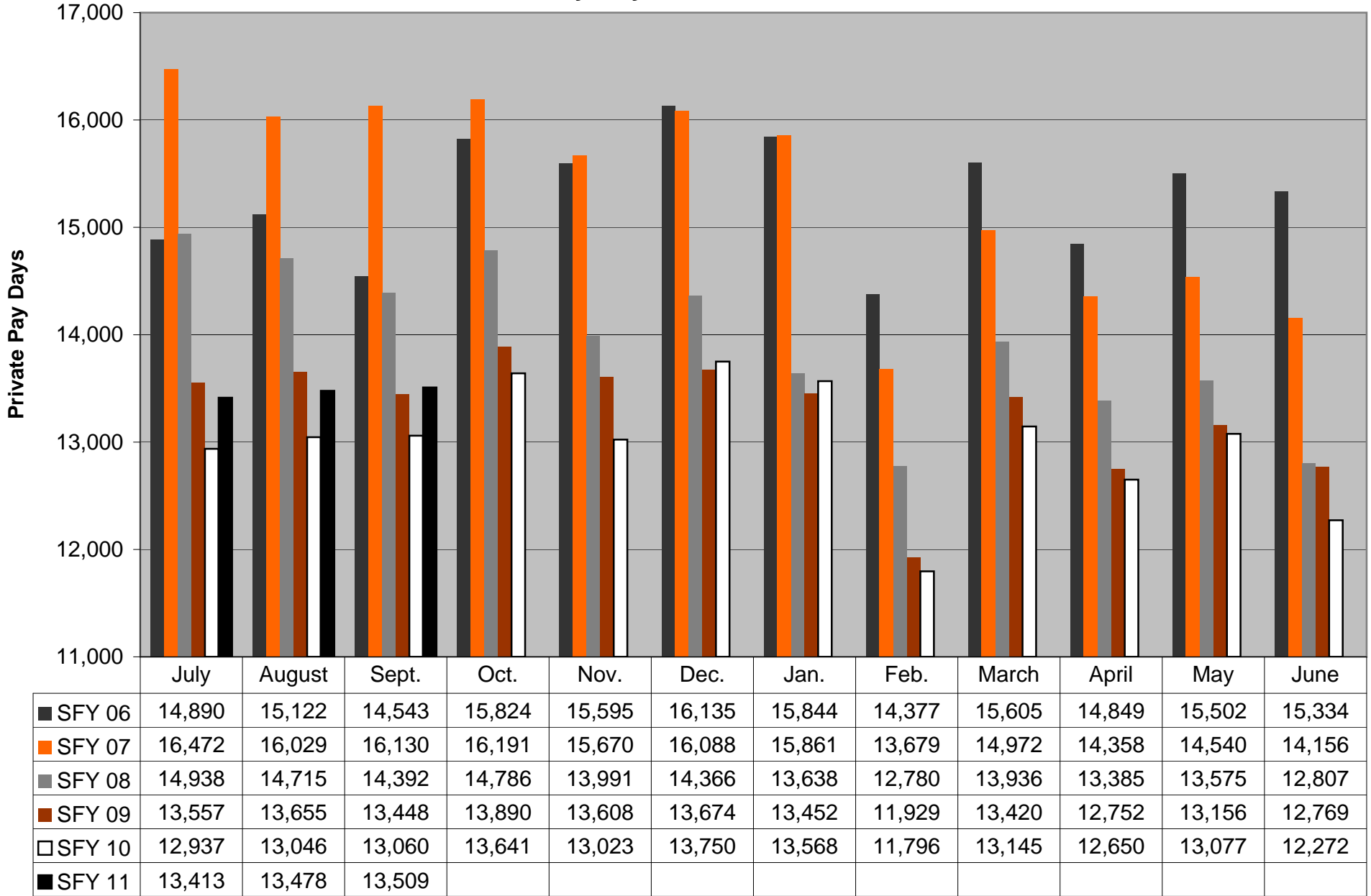
**Private Pay Days from SFY 06 to SFY 11**



	July	August	Sept.	Oct.	Nov.	Dec.	Jan.	Feb.	March	April	May	June
■ SFY 06	14,890	15,122	14,543	15,824	15,595	16,135	15,844	14,377	15,605	14,849	15,502	15,334
● SFY 07	16,472	16,029	16,130	16,191	15,670	16,088	15,861	13,679	14,972	14,358	14,540	14,156
▲ SFY 08	14,938	14,715	14,392	14,786	13,991	14,366	13,638	12,780	13,936	13,385	13,575	12,807
◆ SFY 09	13,557	13,655	13,448	13,890	13,608	13,674	13,452	11,929	13,420	12,752	13,156	12,769
■ SFY 10	12,937	13,046	13,060	13,641	13,023	13,750	13,568	11,796	13,145	12,650	13,077	12,272
● SFY 11	13,413	13,478	13,509									

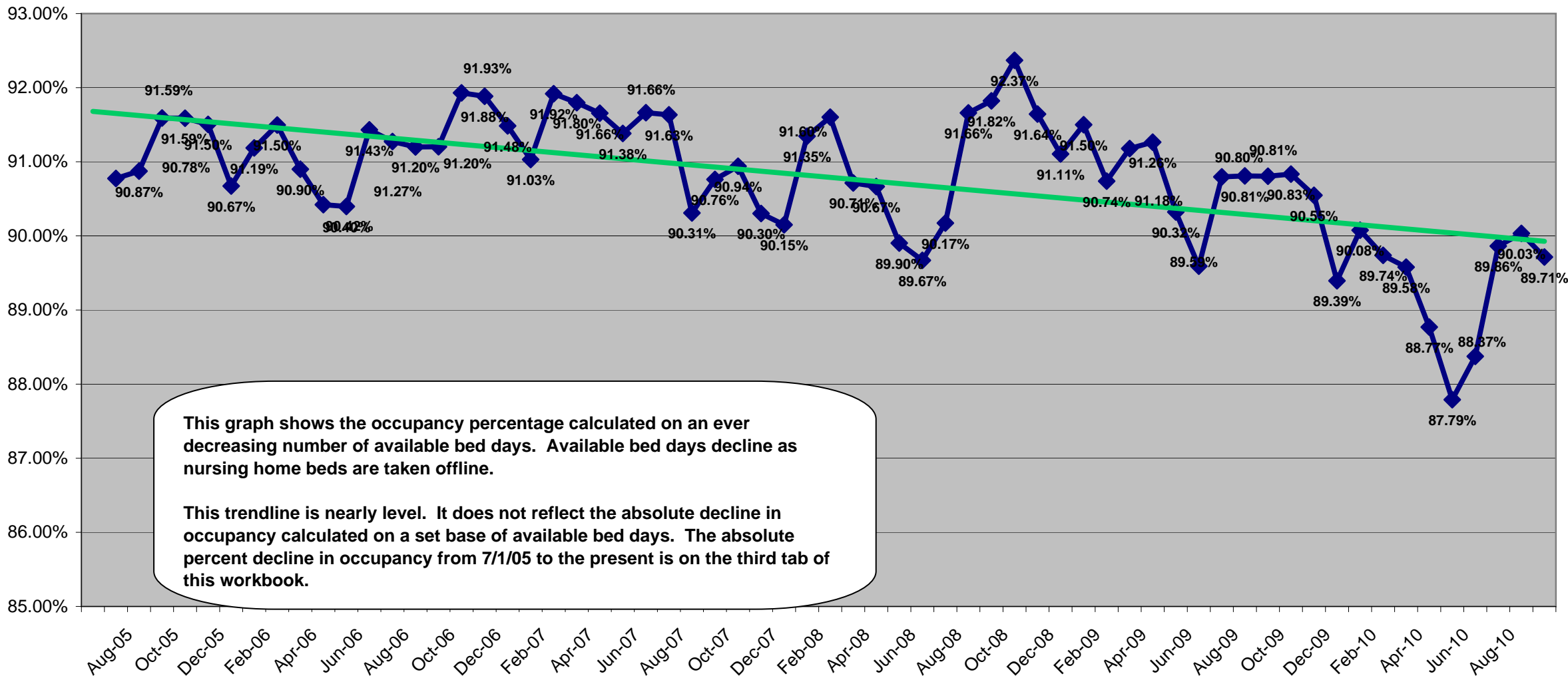
**Month**

### Private Pay Days from SFY 06 to SFY 11

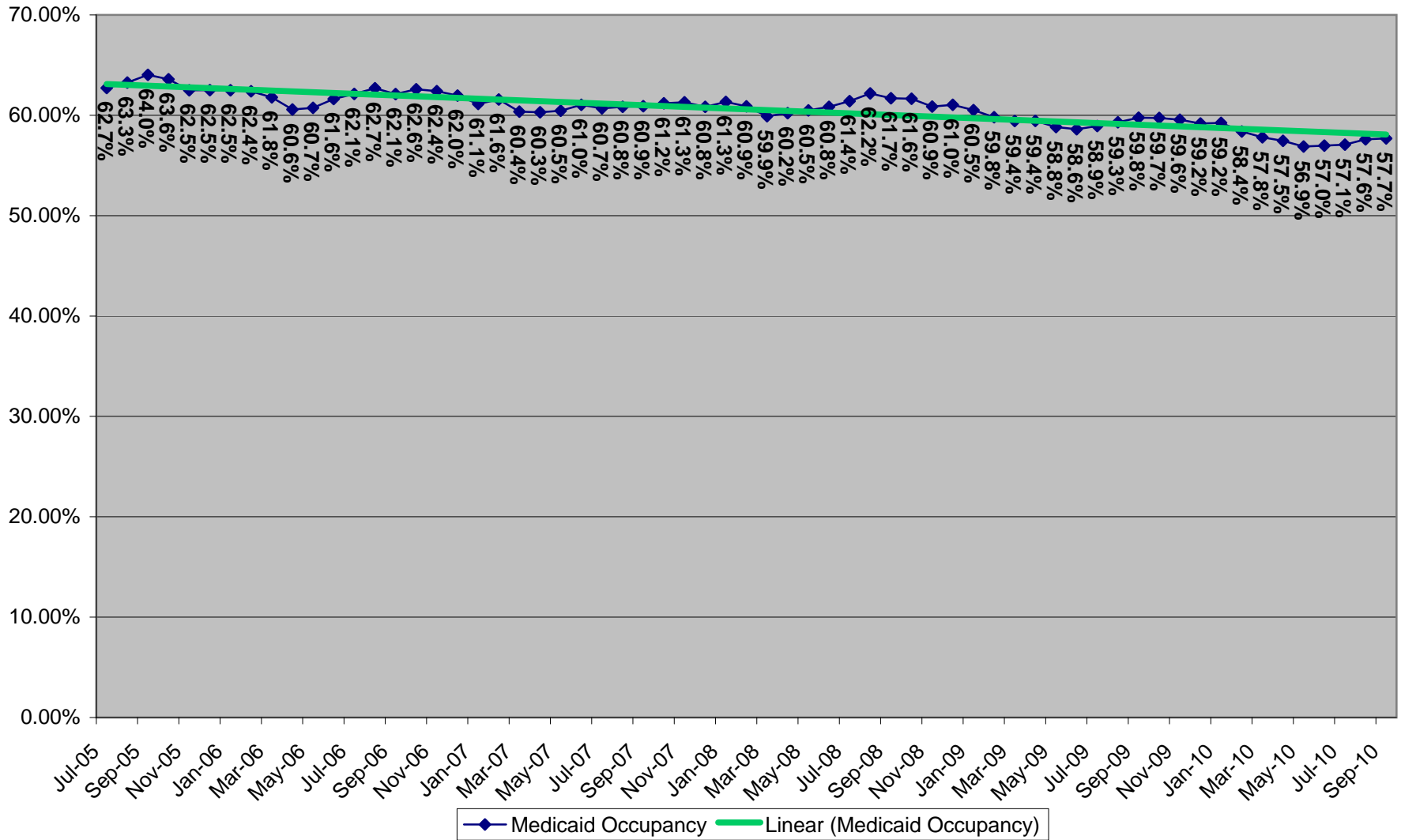


**Month**

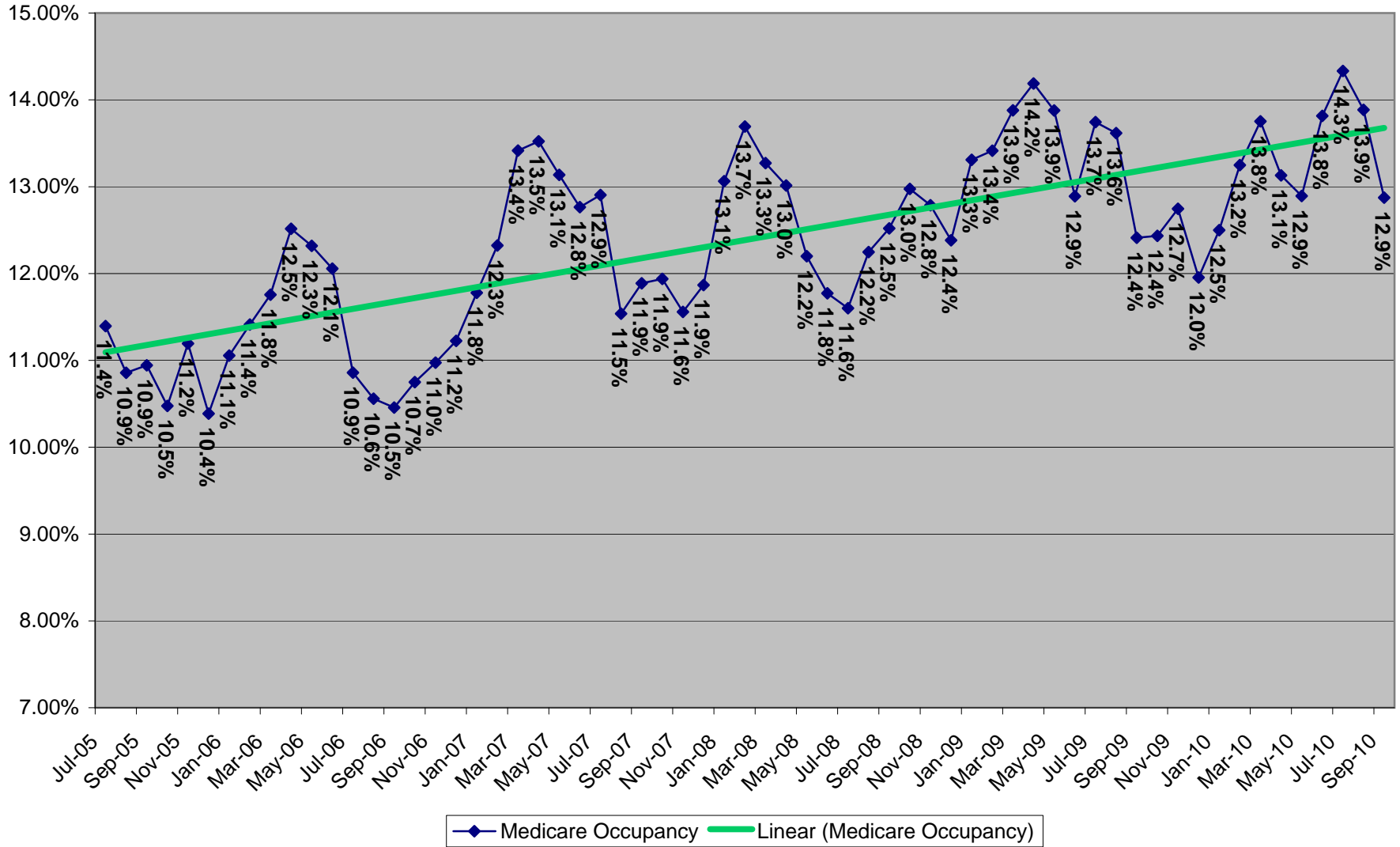
**Total Occupancy as a Percent of Actual Available Bed Days**



**Medicaid Occupancy as a Percentage of Available Bed Days at Vermont Nursing Facilities Participating in the Medicaid Program**  
**Note: Licenced Beds at Facilities Participating in the Medicaid Program Have Declined by 186 Beds During This Period**



**Medicare Occupancy as a Percentage of Available Bed Days at Vermont Nursing Facilities Participating in the Medicaid Program**  
**Note: Licenced Beds at Facilities Participating in the Medicaid Program Have Declined by 186 Beds During This Period**



**Private Payor Occupancy as a Percentage of Available Bed Days at Vermont Nursing Facilities Participating in the Medicaid Program**  
**Note: Licenced Beds at Facilities Participating in the Medicaid Program Have Declined by 186 Beds During This Period**

